

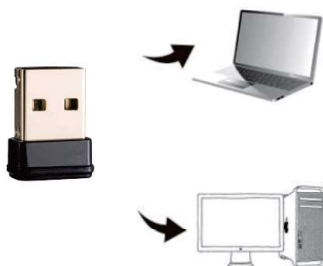
Quick Installation Guide



Realtek Driver Installation

The first Hardware installation

Without powering down the computer, only the card inserted into the corresponding slots in the correct direction. Map with usb adapter as an example.



For Windows7, Please insert the usb adapter directly and then follow the step 2; the software installation. For windows XP/Vista, please insert the usb adapter first. Click "Cancel" after the new hardware setup wizard pop-up, as shown below.

Windows XP



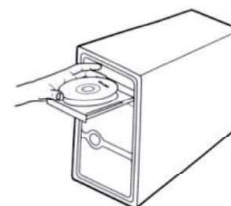
Windows Vista



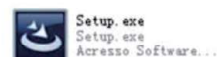
The second Software installation

Software installation process in WINDOWS 7/VISTA/XP is basically the same, this in the WINDOWS Xp system as an example.

A. Put your disc into your CD-ROM drive.



B. Double-click the icon [Setup.exe] from the following path to install.



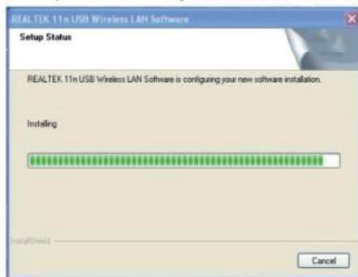
C.prepare installation process only takes a second



D.Click "next" to continue installation.



E.The installation process takes just 3 seconds



F.Please wait for a minute.

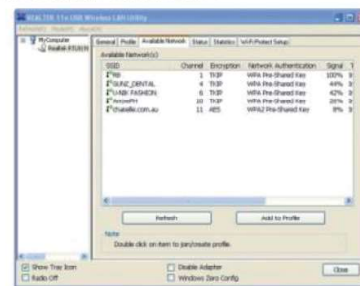


G.Click "finish"

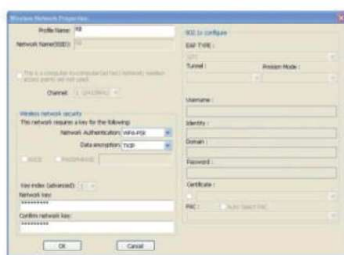


The three connected to the network

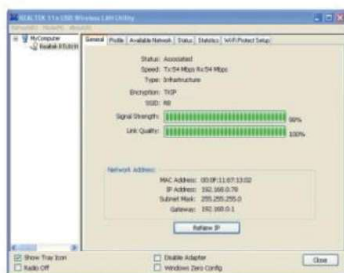
A.after the installation is complete, the client application will run automatically.Double click on the lower right corner of the computer icon. Choose your connection to theAP(for example:WLKJ-WIFIIN),then click on "connection".



B.If you want to connect to the network is not encrypted, so no need for any set Can besuccessfully connected to. If you want to connect to the network is encrypted, please inputrouting network key for the password, click "ok".



C.wireless networks such as bellow, indicates a successful access the network.



The wireless network Card FAQ

Wireless internet access is often cut off net?

- 1.router connection is bad? If there was a loose condition, make sure it is fixed.
- 2.the power adapter and the quality of voltage compliance requirements, can get a look at the adapter problem is it right?
- 3.wireless signal transmission attention is too large or unstable, check card and routing between whether obstacles too much.
- 4.electromagnetic interference, whether near other electromagnetic wave interference of wireless network card.
- 5.the wireless network card driver can work normally, recommend the use of the purchase of wireless network card comes with a CD-ROM drive.

Cable using normal, wireless network can not?

- 1.wireless connection to the IP address, DNS address is automatically acquired, if not, then set the automatic acquisition.
- 2.check the wireless network card and the configuration of the router is consistent, if different, please change the arbitrary end.
- 3.check the wireless connection is to obtain IP address, if no access please link.
- 4.the router firewall filtering rules whether the wireless network card. If you set the filter rules, proposed to delete rules.

Internet download rate without the nominal 1M?

Download speed is B/s,B/s rate unit(B=byte,B=bit). Bit is a binary number, byte bytes,1byte=8bit. Byte 1024Kbit divided only 120 much K, plus other Factors, normal download rates generally the downlink rate is 1/10, if the user downlink rate is 1024Kb/s, the normal rate for general 100KB/s, 2048Kb/s,200KB/s around.

Connection is normal, but very slow?

- 1.the network signal intensity is weak, can add one antenna signal enhancement.
- 2.the software is automatically download updates caused by network congestion. Waiting to update end which returned to normal, and the close the operating system update.
- 3.a computer Trojan horse virus. Suggested use hobbyhorse kill tool overall anti-virus.
- 4.the user bandwidth itself restrict Internet access speed, such as 1M broadband download speeds in 100KB/s left and right sides, multi user shared broadband speed will be lower.